

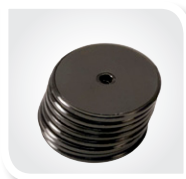
GCS PROXIPEN ACCESSORIES

A wide range of accessories are available to expand the GCS ProxiPen system. The most popular items are explained in this datasheet. There are also a range of other related datasheets including those for the ProxiPen, the ProxiPen Kit, and datasheets for the TopGuard Patrol software.



TG-PATROL-PLUS **Topguard Patrol Plus Management Software**

Offers additional reporting to GCS Topguard Patrol. Up to 250 tours and 7500 checkpoints. Supplied with USB dongle.



PEN-TAG-30 **Proximity Tag 30 mm Diameter**

These tags are supplied with a unique factory pre-set number. Tags are resistant against weather, dirt, grease and moisture. They can be installed by using screws or adhesive tape. They can be placed behind glass or under plaster. Can be read by the ProxiPen only.



TAG-20, TAG-30, TAG-50 **Proximity Tag "Nova"** **20 mm / 30 mm / 50 mm**

These tags are supplied with the same 8-digit format as GCS magnetic data strips. Tags are resistant against weather, dirt, grease and moisture. They can be installed by using screws or adhesive tape. Can be placed behind glass or under plaster. Are compatible with existing GCS systems and can be read by the Escorte Proxi and ProxiPen.



HOLST-PROXIPEN **Holster for ProxiPen**

Protective holster for ProxiPen data collection unit; provided with belt attachment and detachable shoulder strap.



TAG30-ADH TAPE
Adhesive Tape for 30 mm Tags

100 adhesive discs; to improve the fixing of tags to certain surfaces (eg wood, glass).



TAG-UNTERLAGEN
Spacer with double-sided Adhesive Tape for 30 mm Tags

For use when fixing tags to metal surfaces.



ISO-CARD-UNIQUE
ISO ID Card with Magnetic Stripe
(Guard Identification Tag)

Has the same code as the unique tag. Can also be printed with pictures or text for use as a visual identity card.



TEAR-SHAPE-UNIQUE
Key Fob ID (Guard Identification Tag)

Contains a unique code and can be put on any key ring. Can be used to identify personnel, objects or incidents.



WRIST-BAND-UNIQUE
Wrist Band ID
(Guard Identification Tag)

Contains a unique code. Can be worn on the wrist like a watch. Can be used to identify personnel, objects, incidents or duration at a site.



PROXIPEN-INC
ProxiPen Incident Booklet with 20 Tags
1-20

The incident booklet is used to record incidents and activities on site. The booklet contains 20 tags which can be individually designated.



PEN-DTU-KABEL
Serial PC Cable for ProxiPen DTU

To connect the PEN-DTU-USB to a free serial port on the PC. This cable is only used when no USB port is available.



TRANS-UNIVERSAL

Universal transformer with connections for 120V/2-pin and 230V/2-pin & 3-pin. Required for the PEN-DTU-USB when used in serial mode.



MOXA NPORT 5210

The Moxa device is used to connect the DTU to a PC via a network connection.



G4S Technology

www.g4stechnology.com