

# SYMMETRY™ INTRUSION INTEGRATION

The Intrusion Management software enables a user of the Symmetry Security Management System (SMS) software to operate the HISEC CU30 intrusion systems and manage alarms.

An operator can perform actions such as set or unset areas, silence alarms and bypass zones. Alarms from the intrusion system are blended seamlessly into the Symmetry SMS software, becoming part of the standard SMS alarm monitoring and reporting system.

The Intrusion Management software is the ideal choice for organisations that require centralised control, monitoring and alarm management of a building's security systems.

Thanks to the high versatility of the Symmetry SMS software, alarms or events from the CU30 can automatically control other security equipment, such as video cameras, access-controlled doors and external devices. The result is a security management system that is ideally suited to meet the needs of any organisation.

## KEY FEATURES

- Gives centralised alarm handling and reporting
- Allows Symmetry SMS users to operate the HISEC intrusion system
- Enables automatic triggering of other security equipment
- Allows automatic setting / unsetting from Symmetry SMS card transactions
- Provides instant monitoring from the Intrusion Status Toolbar
- Fully integrated with Symmetry SMS Graphics screen
- Full operator logging

## TOTAL ALARM MANAGEMENT FROM A SINGLE INTERFACE

Alarms from the CU30 intrusion system are automatically displayed in the SMS Alarms screen and are recorded for historical reporting. Alarms are presented in exactly the same way as other SMS alarms, making it easy to manage alarms from different sources.

Each alarm type can be assigned a priority, colour, sound and one or more definable instructions that are presented to the guard when the alarm occurs.

When acknowledging an alarm, an operator can enter or select comments to record the actions taken, which may be important when reviewing the alarm at a later date.

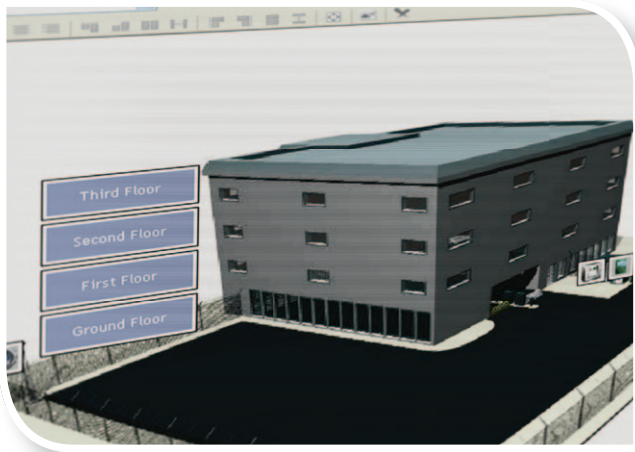
An added benefit is that acknowledging or clearing an alarm automatically silences or clears the alarm at the panel

## EASY ALARM DEFINITION

For ease of use, a set of alarm types matching the requirements of the installed intrusion system are conveniently predefined in the Symmetry SMS software.

## INSTANT MONITORING AND MANAGEMENT FROM A SINGLE TOOLBAR

The Intrusion Status toolbar provides comprehensive zone and area status information, and gives easy access for acknowledging alarms and operating the intrusion system. Totals for a range of status indicators are displayed, giving the operator an instant overview of the current status of the intrusion system.



### OPERATING THE INTRUSION SYSTEM IS EASY USING SYMMETRY SMS COMMANDS

The CU30 intrusion system can be operated using commands from the Symmetry SMS software. An operator can choose commands to set or unset areas, bypass zones or set service mode from the same user interface that is used to control other parts of the security system.

For manual operation, commands can be sent at any time from the Command Centre or from icons in the Graphics screen.

The Command Centre is presented as a tree view, making it easy to expand, collapse and select items as required.

The Command Centre also provides dynamic information about the current status of the system's zones, areas, etc

### AUTOMATED OPERATION

Automated operation is achieved using trigger and scheduled commands. You can, for example, set or unset areas automatically at specified times, or in response to an access-control transaction from a specified card holder, making the process of setting the system and locking doors as easy as swiping a card!

Trigger commands also allow security devices to be controlled automatically using events from the intrusion system. This could, for example, be used to begin a CCTV recording, or to lock doors automatically when the system is set.

### LOCATE ALARMS AND SEND COMMANDS USING GRAPHICS

The Graphics screen makes locating alarms and sending commands easy. A simple glance at a graphic can instantly show the location of an intrusion alarm.

Right-clicking an icon lists the commands that can be sent.

Additional status information is displayed on icons to show tamper, fault, bypassed, set / unset, partially set and other conditions for each object.

### SUPPORTED INTRUSION FUNCTIONS

- Full Intrusion Management
- Intrusion Status toolbar
- Serial interface to SMS client
- Network interface to SMS client
- Upload zones, zone groups, areas & outputs
- Intrusion alarms displayed in Alarms screen
- Acknowledging alarm silences alarm at panel
- Clearing alarm clears alarm at panel
- Definable alarm priority, colour & sound
- Historical alarms reporting
- Icons indicate intrusion alarms
- Icons show panel, area, zone & zone group status
- SMS commands in right-click menu
- SMS commands for operating intrusion system
- Silence panel alarm
- Set panel time and date
- Set / unset panel service mode
- Set / unset zone (SP2)
- Set / unset zone group
- Set / unset area
- Delay auto set
- Bypass or enable zone
- Complete Status display and Command Centre operation
- Trigger commands activate on intrusion alarm / event



G4S Technology

[www.g4stechnology.com](http://www.g4stechnology.com)