

SYMMETRY™ INTERCOM CONTROL INTEGRATION

The Symmetry Intercom Control Integration package provides a graphical intercom call station connection and logging capability from within the Access Control and Security Management System (SMS). Intercom call requests, connections and status are all shown on one easy to use screen. If required, intercom call stations may be grouped and routed to an unrestricted number of client machines. This is especially useful for busy sites, which may have a large number of call stations installed. The operator can make and receive intercom calls, plus log intercom activity. Extensive history reporting capabilities provide the operator with accurate call station connection information.

Full Intercom functionality is also available through the standard Map features available in the Business, Professional, Enterprise and Global Software packages.

Intercom requests can be reported as an alarm and the call connection can be made directly from the Alarms screen.

The operator can optionally associate an audio file and command action with each call station.

Call requests, connections and command actions are performed using the "View - Intercom Control Screen", which is available for selection on any standard client machine that has an intercom station number defined. The status of all call requests and connections is updated on all client machines. The system prevents multiple operators from attempting to connect to the same call station at the same time.

KEY FEATURES

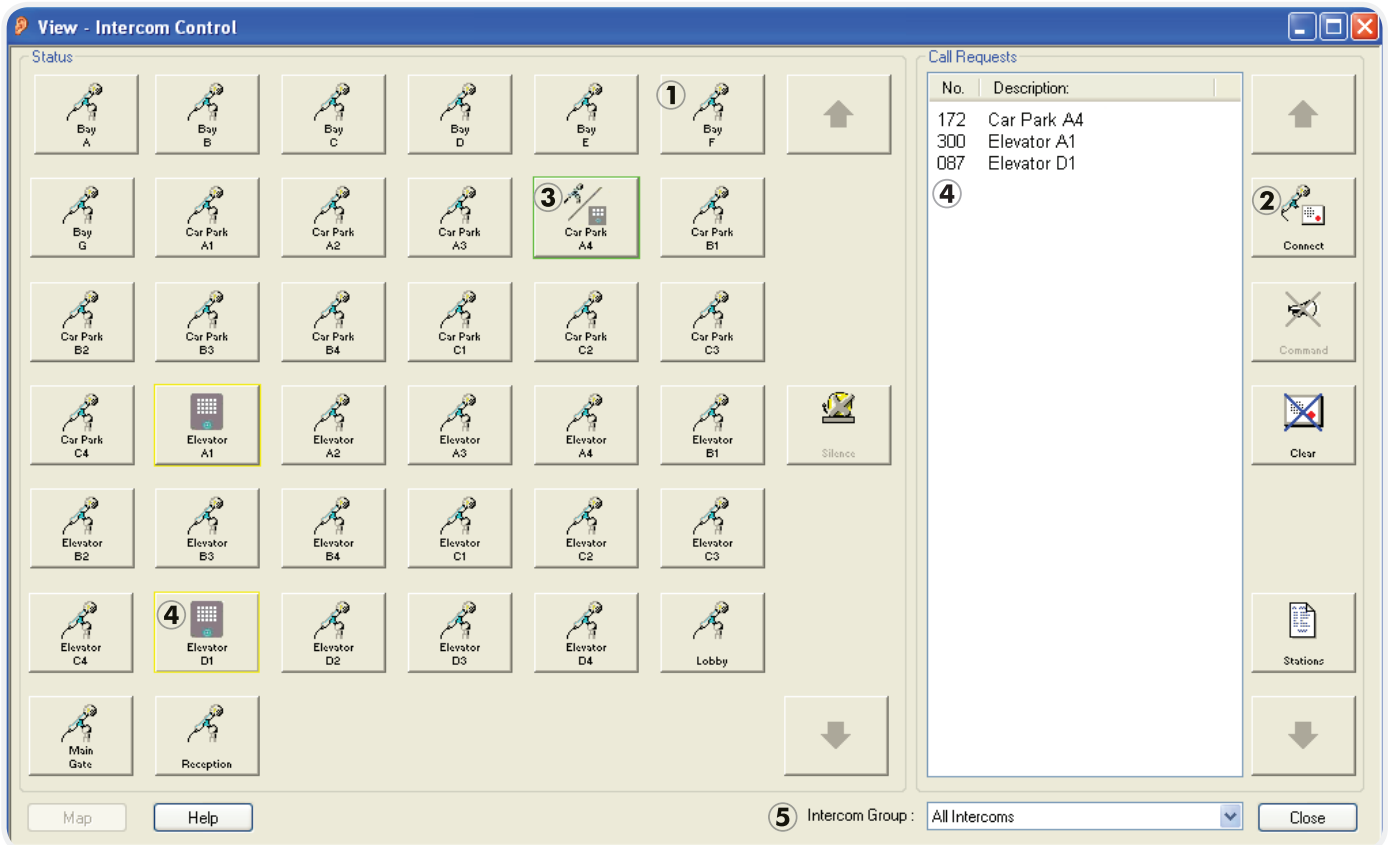
- When selected the screen automatically updates and displays a call station button for each call station contained in the selected group
- Pressing the call station button or connect button again will terminate the call
- The intercom group contains lists of all intercom station groups defined for the company
- When a call request is received it is added to the call request list and the associated call station icon changes from the default microphone icon to an intercom icon, the button border will flash yellow and the associated sound file will be played
- When a connection is made the call station icon will be updated to a microphone / intercom icon, and the button border will change to a steady green border. Pressing the command button will send any associated command.

PURCHASING INFORMATION

- INTERCOM-KIT-V6.2

KEY FEATURES

- ① When selected the screen automatically updates and displays a call station button for each call station contained in the selected group
- ② Pressing the call station button or connect button again will terminate the call



- ③ The intercom group contains lists of all intercom station groups defined for the company
- ④ When a call request is received it is added to the call request list and the associated call station icon changes from the default microphone icon to an intercom icon, the button border will flash yellow and the associated sound file will be played
- ⑤ When a connection is made the call station icon will be updated to a microphone / intercom icon, and the button border will change to a steady green border. Pressing the command button will send any associated command.



G4S Technology
www.g4stechnology.com