



SYMMETRY™

GUARD PATROL MANAGER

The Symmetry Guard Patrol Manager is an optional module for configuring, recording and reviewing guard patrols.

The module includes a complete set of tools for setting up and managing patrols entirely from the Security Management System (SMS) software. It benefits from the ability to use access control readers as tour checkpoints, resulting in the need for no specialist hardware or data-collection devices, and making the introduction of patrol management both cost-effective and easy to implement.

Patrols can be set up to specify the sequence of checkpoints to visit and the time allowed for the guard to travel between them.

The progress of a patrol can be monitored, and previous patrols reviewed in reports. Of particular benefit in high-security applications is the ability for the system to notify SMS operators immediately of any rule infringements, such as missed checkpoints or late arrival.

GCS® TOPGUARD® INTERFACE

The module also provides an interface to the popular GCS TopGuard software.

TopGuard makes it easy to check a wide range of items, such as windows, fire extinguishers and keys, and for the guard to record any incidents during a tour. Simply presenting a data-collection device such as a ProxiPen® to a small RFID Tag records the visit or incident.

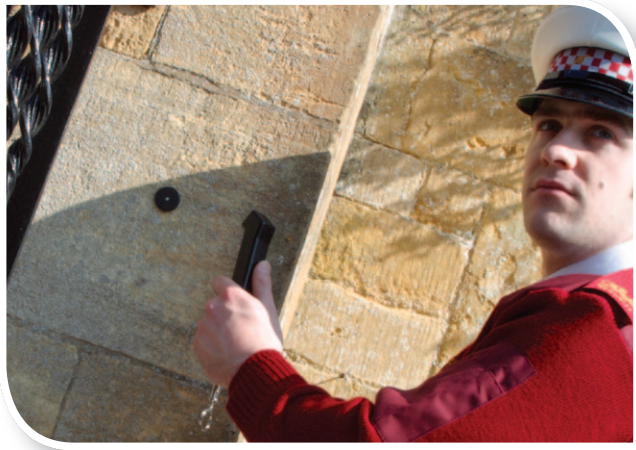
The interface automatically transfers all visited checkpoints and any recorded incidents to the SMS software for centralized reporting and alarm handling.

KEY FEATURES

- Gives two-way control and exchange of data between the SMS and other systems
- Cost effective and easy to implement
- Brings greater levels of security
- Enables patrol tours to be set up and monitored effectively
- Standard access control readers or monitor points can be used as patrol checkpoints
- Indicates deviations from patrol rules
- Provides immediate notification of rule infringements

TOPGUARD INTERFACE - KEY FEATURES

- Interfaces with TopGuard Patrol and Patrol Plus software
- Allows integration with GCS and Detex Proxipen® data collection units
- Gives freedom to check any location
- Reports visited checkpoints and incidents to the SMS
- Allows centralized reporting from the SMS



SPECIFICATIONS

Patrol Tour Definition

- Specifies the sequence of checkpoints to visit and the min / max arrival times to each checkpoint
- Allows multiple patrol tours to be set up and run simultaneously
- Readers and monitor points (such as key switches) can be used as checkpoints

Running Patrol Tours

- Card Holders screen specifies card holders authorized to participate in patrol tours
- A valid access control, card command or card-conditional transaction can be accepted as a patrol tour transaction
- Patrol tour transactions need not unlock doors

Reports

- View / Activity screen allows the progress of a patrol to be monitored
- View / History / Patrols screen gives details of previous patrol, including any rule infringements
- View / History / Pre-selected screen can be used to run pre-defined patrol reports
- Configuration report gives details of patrol definition

Recorded Alarms / Events

- Successful Clock at Point – Guard arrived at checkpoint as scheduled
- Arrived too Early at Point – Guard arrived too early at checkpoint
- Overdue at Point – Guard did not arrive at checkpoint within the time allowed
- Out of Sequence at Point – Guard missed checkpoint
- Patrol Tour Complete – Guard completed tour
- Control Point – Guard arrived at a TopGuard checkpoint
- Incident – Guard logged a TopGuard incident

Commands

- Patrol Start command – Starts a specified patrol
- Patrol Hold command – Temporarily pauses a patrol
- Patrol Reset command – Used to acknowledge that a patrol was monitored and completed

GCS TopGuard Interface

- Interfaces to TopGuard Patrol and Patrol Plus
- Automatically transfers visited checkpoints and any recorded incidents (e.g. "window open")
- Allows selective reporting of points and incidents
- Enables incidents to be displayed in the View / Alarms screen



G4S Technology

www.g4stechnology.com